

# COUNTRYSIDE P.U.D. - UNIT III E

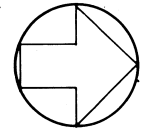
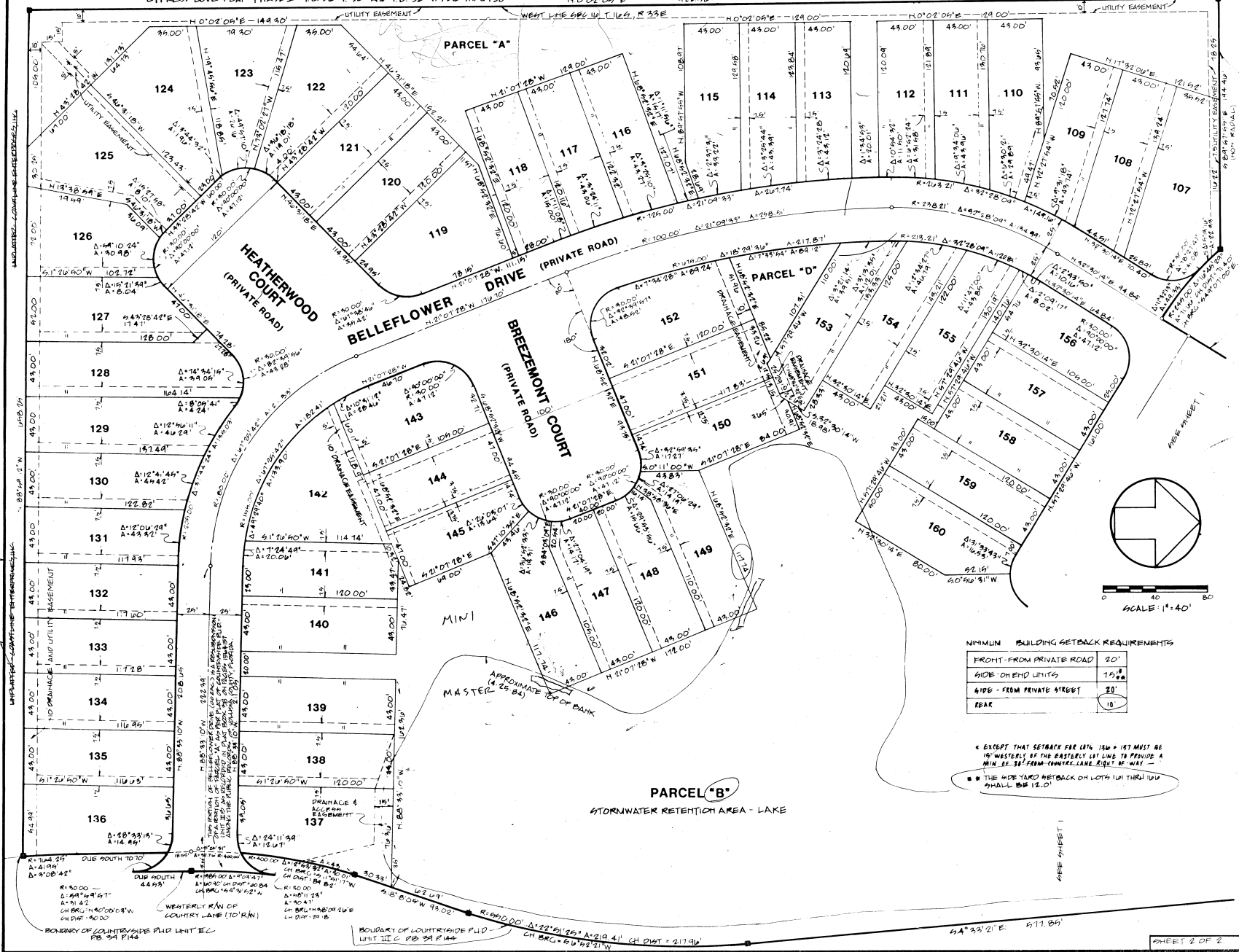
SECTION 16, TOWNSHIP 16 SOUTH, RANGE 33 EAST, CITY OF PORT ORANGE, VOLUSIA COUNTY, FLORIDA

PLAT BOOK 411 PAGE 92

CYPRESS LANE PLAT PHASE I PB 36 R 30 AND PB 35 R 12 W THIRD 198 N 0° 02' 06" E 422.61' 422.61'

POINT OF BEGINNING

See Subplat IVA Parcel A



SCALE: 1" = 40'

MINIMUM BUILDING SETBACK REQUIREMENTS	
FRONT - FROM PRIVATE ROAD	20'
SIDE - ON END LOTS	15'
41PS - FROM PRIVATE STREET	20'
REAR	10'

\* EXCEPT THAT SETBACK FOR LOTS 156 + 157 MUST BE 15' WESTERLY OF THE EASTERLY LOT LINE TO PROVIDE A MIN. 30' FROM COUNTRY LAKE RIGHT-OF-WAY -

\*\* THE 10' YARD SETBACK ON LOTS 141 THRU 149 SHALL BE 12.0'

BOUNDARY OF COUNTRYSIDE P.U.D. UNIT III C PB 34 R 144  
 CH BRG = 69° 52' 31" W  
 CH DIST = 217.36'

BOUNDARY OF COUNTRYSIDE P.U.D. UNIT III E PB 34 R 144  
 CH BRG = 69° 52' 31" W  
 CH DIST = 217.36'

BOUNDARY OF COUNTRYSIDE P.U.D. UNIT III E PB 34 R 144  
 CH BRG = 69° 52' 31" W  
 CH DIST = 217.36'

BOUNDARY OF COUNTRYSIDE P.U.D. UNIT III E PB 34 R 144  
 CH BRG = 69° 52' 31" W  
 CH DIST = 217.36'

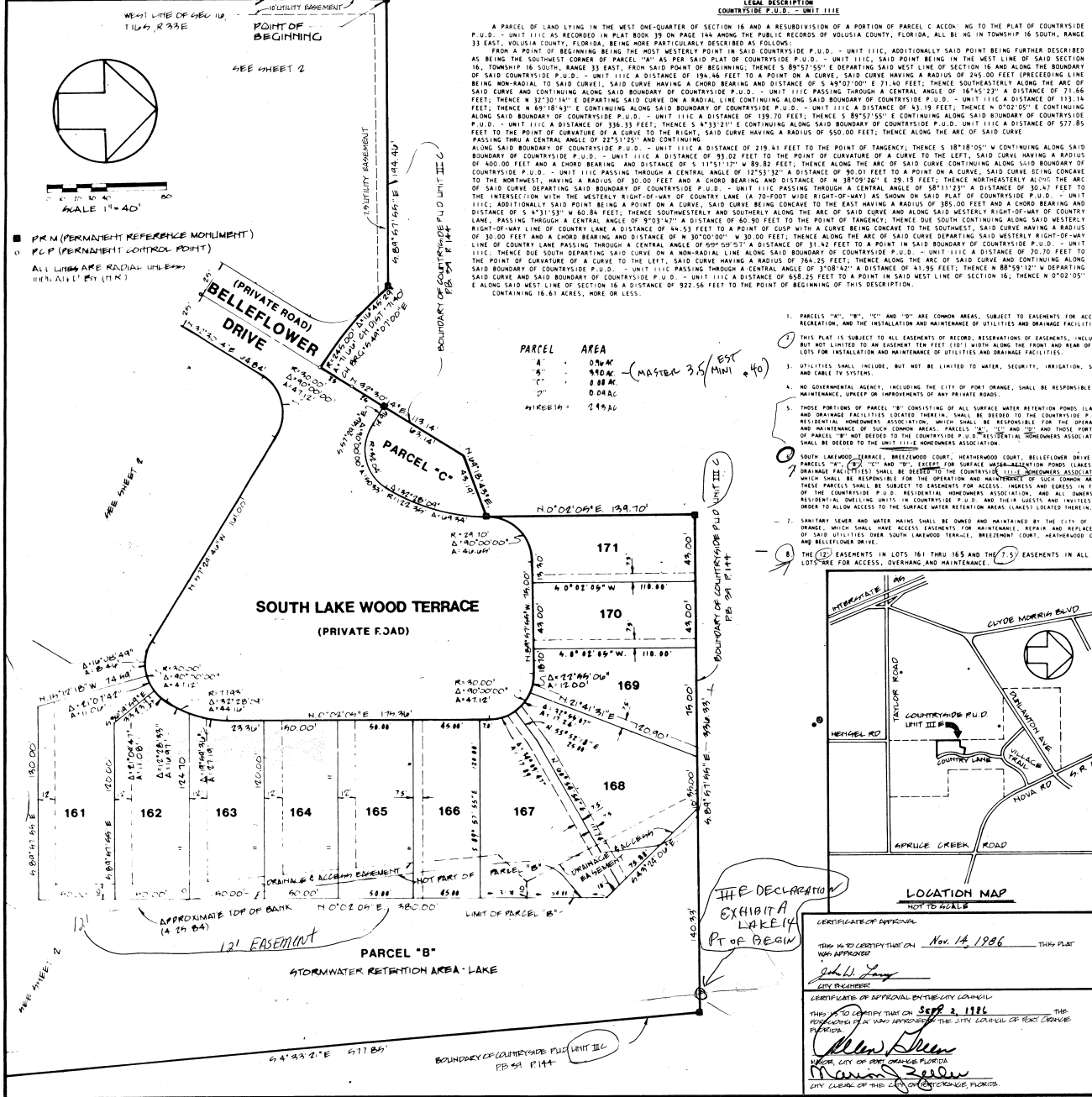
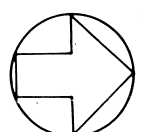
BOUNDARY OF COUNTRYSIDE P.U.D. UNIT III E PB 34 R 144  
 CH BRG = 69° 52' 31" W  
 CH DIST = 217.36'

BOUNDARY OF COUNTRYSIDE P.U.D. UNIT III E PB 34 R 144  
 CH BRG = 69° 52' 31" W  
 CH DIST = 217.36'

MB  
PG  
TIT

# COUNTRYSIDE P.U.D. - UNIT III E

## SECTION 16, TOWNSHIP 16 SOUTH, RANGE 33 EAST, CITY OF PORT ORANGE, VOLUSIA COUNTY, FLORIDA



THE DECLARATION  
EXHIBIT A  
LAKELAND  
PLAT OF BEGIN

LOCATION MAP  
NOT TO SCALE

PLAT BOOK 41 PAGE 98

**DECLARATION**  
I, the undersigned, being a duly licensed and registered land surveyor, do hereby certify that on 23rd day of September, 1986, I have examined the foregoing plat and find that it complies in form with the requirements of Chapter 177, Florida Statutes, and was filed for record on 23rd day of September, 1986.

IN WITNESS WHEREOF, **CAROLINNE SIEBEL** has caused these presents to be signed and affixed and attested by her hand and the seal of said office on this 23rd day of September, 1986.

STATE OF FLORIDA  
COUNTY OF VOLUSIA

SIGNED, SEALED AND DELIVERED IN THE PRESENCE OF:  
BY: William H. Brown, President  
BY: William H. Brown, Secretary  
BY: William H. Brown, Treasurer

**CERTIFICATE OF SURVEY**  
I, the undersigned, being a duly licensed and registered land surveyor, do hereby certify that on 23rd day of September, 1986, I have examined the foregoing plat and find that it complies in form with the requirements of Chapter 177, Florida Statutes, and was filed for record on 23rd day of September, 1986.

IN WITNESS WHEREOF, **CAROLINNE SIEBEL** has caused these presents to be signed and affixed and attested by her hand and the seal of said office on this 23rd day of September, 1986.

STATE OF FLORIDA  
COUNTY OF VOLUSIA

SIGNED, SEALED AND DELIVERED IN THE PRESENCE OF:  
BY: William H. Brown, President  
BY: William H. Brown, Secretary  
BY: William H. Brown, Treasurer

**CERTIFICATE OF APPROVAL BY THE CITY COUNCIL**  
THIS IS TO CERTIFY THAT ON 23rd day of September, 1986, the foregoing plat was approved by the City Council of Port Orange, Florida.

**CERTIFICATE OF CLERK**  
I hereby certify that I have examined the foregoing plat and find that it complies in form with the requirements of Chapter 177, Florida Statutes, and was filed for record on 23rd day of September, 1986.

FILE NO. 23-986

**CERTIFICATE OF APPROVAL BY THE PLANNING COMMISSION**  
THE PORT ORANGE PLANNING COMMISSION HEREBY APPROVES THE FINAL PLAT FOR THE COUNTRYSIDE P.U.D. - UNIT III E.

DATE: July 24, 1986

Gene M. Moore  
CHAIRMAN, PORT ORANGE PLANNING COMMISSION

See Also  
Replat of  
Lots 165, 166  
J. DeLamb