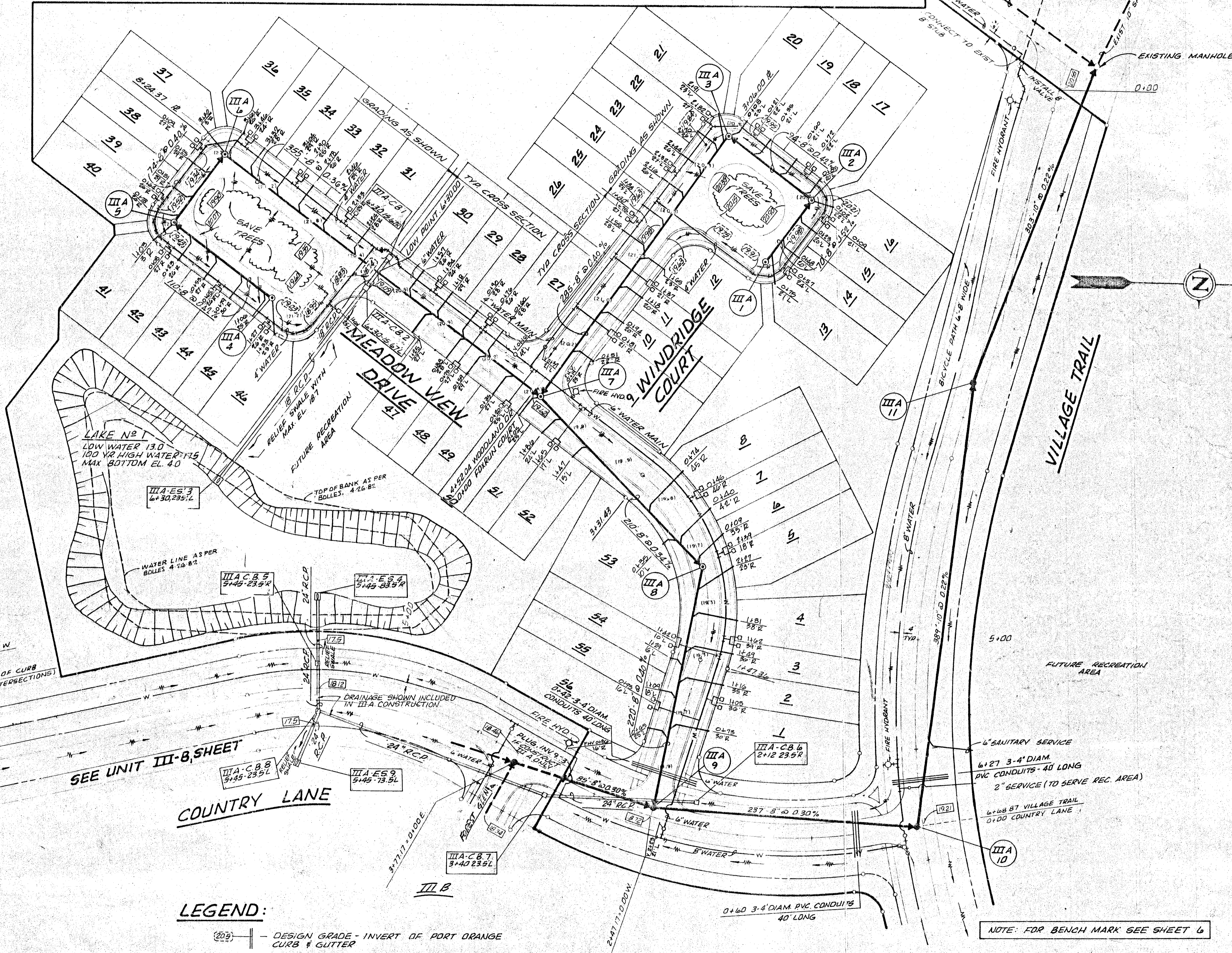


III-A MEADOWS

CYPRESS COVE SUBDIVISION



LEGEND:

- (20.5) — DESIGN GRADE - INVERT OF PORT ORANGE CURB & GUTTER
- (20.5) — DESIGN GRADE - TO POINT INDICATED
- (20.5) — EXISTING ELEVATION
- FLOW OF STORMWATER RUNOFF

No.	Date	Description	By
5	4-29-82	ADDED "AS BUILT" LAKE NO. 1 AS PER BOLLES 4-26-82	T.W.
4	3-31-82	ADDED SHT. 18, REV. NO. OF SHEETS	T.W.
4	10-26-81	GENERAL REVISIONS	T.W.
3	9-30-81	REVISED SERVICE TO REC. AREA	T.W.
2	9-14-81	GENERAL REVISIONS	Z.C.
1	3-21-81	GENERAL REVISIONS	T.W.

COUNTRYSIDE P.U.D. UNIT III-A DEVELOPMENT PLANS

CITY OF PORT ORANGE		VOLUSIA COUNTY, FLORIDA	
DATE	8-30-84	DESIGNER	WALKER
DATE	7-27-81	ENGR. SUPERVISOR	J.U.D.
SCALE	1" = 50'	SHEET	5 OF 18